

Innovation and Opportunities: The 2023 State LTSS Scorecard

A State Scorecard on Long-Term Services and Supports for Older Adults, People with Physical Disabilities, and Family Caregivers

October 30, 2023
LTSSChoices.AARP.org



#LTSSscorecard



1

1

Our Fifth Scorecard!



LTSSChoices.AARP.org

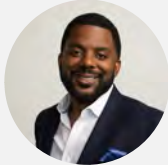
2

2

AARP LTSS Scorecard Leadership Team



Susan C. Reinhard, PhD, RN, FAAN
Senior Vice President and Director
Public Policy Institute



Rodney Harrell, PhD
Vice President



Carrie Blakeway Amero, MPAff
Director, LTSS



Julia Alexis, MA
Vice President



Rita Choula, MA
Senior Director, Caregiving



LTSSChoices.AARP.org

AARP LTSS Scorecard Team



Selena Caldera, MPP
Senior Strategic
Policy Advisor



**Carlos Figueiredo,
MA, PhD**
Senior Methods Advisor



Brendan Flinn, MPH
Senior Policy Advisor



Edam Hado, MPH
Senior Strategic
Policy Advisor



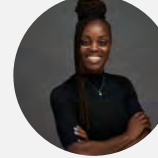
Paul Lingamfelter, MHA
Senior Policy Analyst



Ari Houser, PhD
Senior Methods Advisor



Tetyana Shippee, PhD
Professor, University of
Minnesota



**Jasmine Travers, PhD,
MHS, RN, AGPCNP-BC**
Assistant Professor, New
York University

Jennifer Melendres
Project Manager



LTSSChoices.AARP.org

Thank you, Scorecard Funders

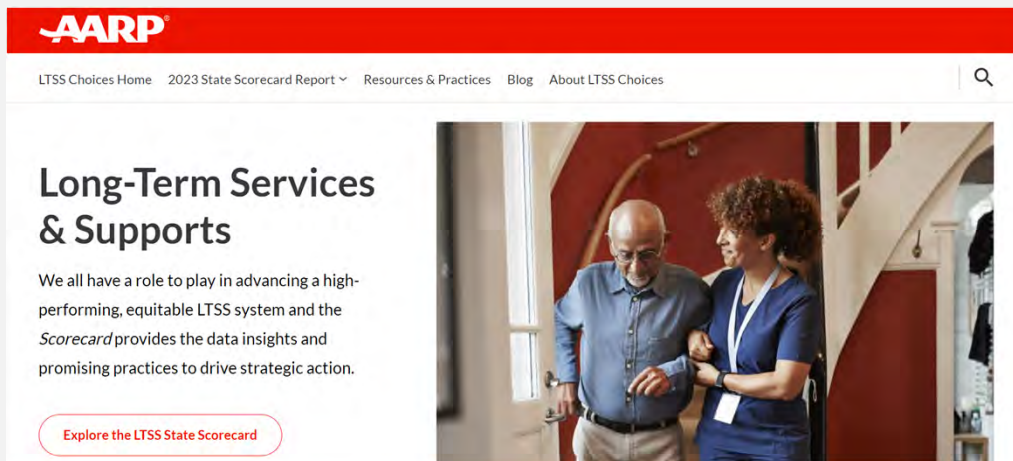


LTSSChoices.AARP.org

5

5

New Website: LTSSChoices.AARP.org



LTSSChoices.AARP.org

6

6

What's New

- Revised Conceptual Framework
- New and Revised Indicators
- Innovation Points
- Performance Tiers
- New Methodology
 - Consideration of equity
 - Dimension scoring



LTSSChoices.AARP.org

7

7

Revised LTSS State Scorecard Framework



LTSSChoices.AARP.org

8

8

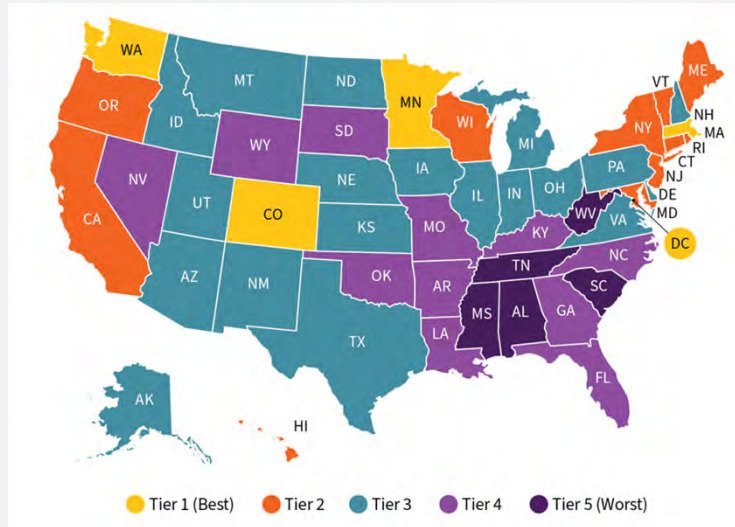
Revised LTSS State Scorecard Framework

<p>Affordability and Access</p>	<ul style="list-style-type: none"> Consumers can easily find and afford services, with meaningfully available safety net for those who cannot afford services. Safety net LTSS do not create disparities by income, race/ethnicity, or geography.
<p>Choice of Setting and Provider</p>	<ul style="list-style-type: none"> A person- and family-centered approach allows for consumer choice and control of services (including self-directed models). A well-trained and adequately paid workforce is available to provide LTSS. Home and community-based services (HCBS) are widely available. Provider choice fosters equity, and consumers across communities have access to a range of culturally competent services and supports.
<p>Safety and Quality</p>	<ul style="list-style-type: none"> Consumers are treated with respect and preferences are honored whenever possible, with services maximizing positive outcomes- including during and after care transitions. Residential facilities and HCBS settings are adequately staffed and prepared for emergencies. Policy-, system-, and practice-level efforts reduce and/or prevent disparities in quality and outcomes.
<p>Support for Family Caregivers</p>	<ul style="list-style-type: none"> Family caregivers are recognized, and their needs are assessed and addressed, so they can receive the support they need to continue their essential roles. A robust LTSS workforce limits over-reliance on family caregivers. Family caregiver supports are culturally appropriate and accessible to all communities.
<p>Community Integration</p>	<ul style="list-style-type: none"> Consumers have access to a range of services and supports that facilitate LTSS, including safe and affordable housing. Communities are age-friendly, supported by state Multisector Plans for Aging. Policy and programming that facilitates livable communities also drive equitable communities.



LTSSChoices.AARP.org

LTSS State Scorecard State Performance by Tier



LTSSChoices.AARP.org

LTSS State Scorecard Overall Rankings

TIER 1		TIER 3		TIER 4	
State	Rank	State	Rank	State	Rank
Minnesota	1	Delaware	17	South Dakota	36
Washington	2	Nebraska	18	Arkansas	37
District of Columbia	3	North Dakota	19	Missouri	38
Massachusetts	4	New Mexico	20	Georgia	39
Colorado	5	Pennsylvania	21	Wyoming	40
		Arizona	22	North Carolina	41
		Iowa	23	Kentucky	42
		New Hampshire	24	Florida	43
		Illinois	25	Nevada	44
		Alaska	26	Louisiana	45
		Indiana	27	Oklahoma	46
		Virginia	28		
		Utah	29	TIER 5	
		Kansas	30	State	Rank
		Michigan	31	Tennessee	47
		Ohio	32	Mississippi	48
		Montana	33	South Carolina	49
		Texas	34	Alabama	50
		Idaho	35	West Virginia	51



LTSSChoices.AARP.org

11

11

Innovation Points

Innovation Point Criteria

1. Adopted in only a few states but have notable potential for scaling.
2. Promising or evidence-based.
3. Within the control of state government leaders to implement or adopt.
4. Explicit goals of improving state performance in at least one of the dimensions of the Scorecard.

2023 Innovation Points Awarded



AFFORDABILITY AND ACCESS

Presumptive eligibility for HCBS



CHOICE OF SETTING AND PROVIDER

CAPABLE
(Community Aging in Place—Advancing Better Living for Elders) Program
and Green House Nursing Homes



SAFETY AND QUALITY

Enhanced State Hazard Mitigation Plans



SUPPORT FOR FAMILY CAREGIVERS

Caregiver Tax Credit



COMMUNITY INTEGRATION

Multisector Plan for Aging



LTSSChoices.AARP.org

12

12

Scorecard Indicators with the Most Improvement or Decline

Indicators With Most States Showing Improvement	Indicators With Most States Showing Decline
<ul style="list-style-type: none"> • Self-Direction Enrollment (35 states) 	<ul style="list-style-type: none"> • Home Care Cost (23 states)
<ul style="list-style-type: none"> • Aging and Disability Resource Center/No Wrong Door (34 states) 	<ul style="list-style-type: none"> • Adult Day Services Supply (21 states)
<ul style="list-style-type: none"> • Home Health Hospitalizations (32 states) 	<ul style="list-style-type: none"> • Home Health Aide Supply (16 states)



LTSSChoices.AARP.org

13

13

Declining Performance in Home Care and Adult Day Services

Indicator	Previous Scorecard National Performance	Current Scorecard National Performance
Home Care Cost: Median annual home care private pay cost as a percentage of median household income ages 65+	73%	83%
Adult Day Services Supply: Adult day services total licensed capacity per 10,000 population ages 65+	61	54
Home Health Aide Supply: Home health and personal care aides per 100 population with an Activity of Daily Living (ADL) disability, ages 18+	23.2	24.8



14

14

Scorecard Major Themes Since 2009

- Medicaid LTSS Spending to HCBS for Older Adults and People with Physical Disabilities
- Enrollment in Self-Directed Services
- Employment of People with Disabilities
- Nurse Delegation
- Medicaid Enrollment of Low-Income People with Disabilities



LTSSChoices.AARP.org

15

15

Family Caregiving and the Scorecard

- State performance on *Support for Family Caregivers* is more closely aligned with overall state performance than any other dimension.
- States that rank the best with respect to their policies to support family caregivers tend to rank higher overall across the dimensions.

Dimension	Correlation Between Dimension Performance and Overall Performance
Support for Family Caregivers	0.84
Safety and Quality	0.80
Choice of Setting and Provider	0.77
Community Integration	0.70
Affordability and Access	0.65



LTSSChoices.AARP.org

16

16

Family Caregiving and the Scorecard

- The family caregiving dimension's findings are the most consistent compared to the 2020 edition.
- **Implementation** is key for states that have already enacted certain policies.
- Most states continue to have opportunity to improve supports.
 - Paid family leave
 - Tax credits for family caregivers
 - Paid sick days and flexible use
 - Nurse delegation and scope of practice



LTSSChoices.AARP.org

17

17

The Scorecard and the LTSS Workforce

- This new *Scorecard* includes new indicators describe state performance in wages, turnover, and staffing levels
- All states in the top two performance tiers demonstrate better-than-average performance specific to the workforce indicators.

Indicator Name	Indicator Data Source	Indicator Data Year(s)
Home Health/Personal Care Aide Supply	American Community Survey Data	2020-2021
New: Direct Care Worker Wage Competitiveness	PHI State Workforce Data Index	2021
New: Direct Care Worker Wage Pass Through Policy	PHI State Workforce Data Index	2022
New: Nursing Home Staffing Levels	Centers for Medicare & Medicaid Services	2021
New: Nursing Home Staff Turnover	Centers for Medicare & Medicaid Services	2022



LTSSChoices.AARP.org

18

18

Good Workforce Performance Begets Stronger LTSS System Performance

State	Overall Rank	Performance Tier	Workforce Aggregate Rank ¹¹
Minnesota	1	1	10
Washington	2	1	7
District of Columbia	3	1	12
Massachusetts	4	1	1
Colorado	5	1	18
New York	6	2	5
Oregon	7	2	19
Hawaii	8	2	21
Vermont	9	2	24
New Jersey	10	2	16
California	11	2	3
Rhode Island	12	2	17
Connecticut	13	2	4
Maryland	14	2	20
Wisconsin	15	2	14



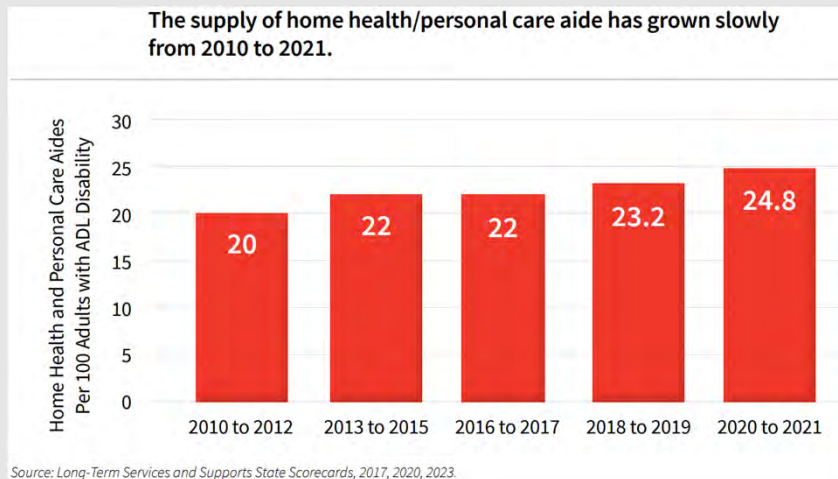
LTSSChoices.AARP.org

19

19

Home Health/Personal Care Aide Supply Over Time

The supply of home health/personal care aide has grown slowly from 2010 to 2021.



Source: Long-Term Services and Supports State Scorecards, 2017, 2020, 2023.

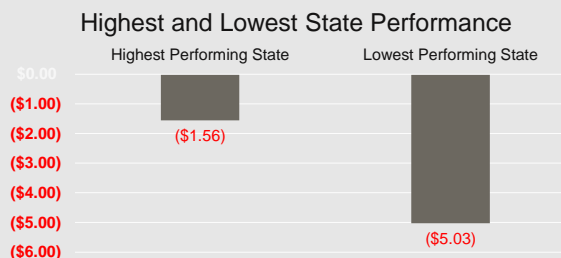


20

20

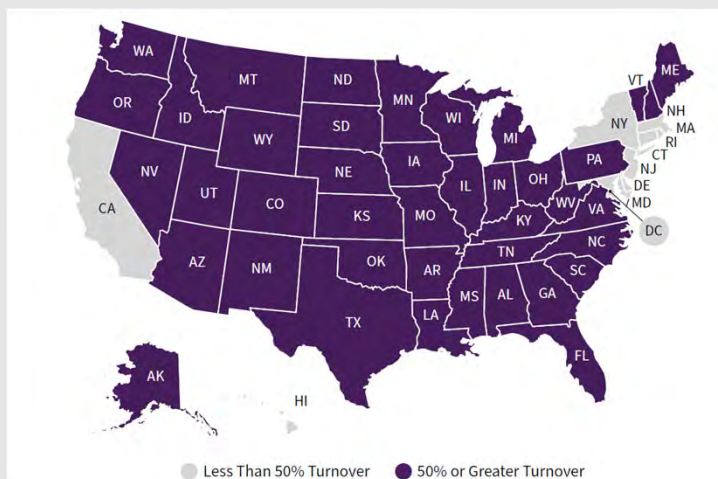
Direct Care Worker Wage Competitiveness

- No state's median wage for direct care workers meets or exceeds the median wage for comparable occupations.
- Ensuring that LTSS worker wages are competitive within specific state markets is critical to building and keeping LTSS workforces in place to meet the needs of consumers and family caregivers.



21

High Turnover Persists in Nursing Homes Nationally



22

Definition of LTSS Equity in the Scorecard

Equity in a high performing LTSS system means that high performance is shared across **all groups**, defined by race/ethnicity, gender identity, sexual orientation, age, disability status, and income, among others.

States where every measured group does well will score highly, and states in which some groups perform poorly will score lower.

The 2023 LTSS State Scorecard displays overall performance as well as performance for different racial/ethnic groups wherever data are available. As more data become available, we hope to be able to include other groups and additional indicators in future editions.



LTSSChoices.AARP.org

23

23

Stark Inequities Exist for Nursing Home Staffing

Group		Nursing care hours per resident per day (highest to lowest)	Fewer minutes of care per day compared to group with most hours of care	Fewer hours of care per year compared to group with most hours of care
All facilities		3.53		
Facilities with the top 10% of admissions by race/ethnicity	White residents	3.85	N/A	N/A
	Multiracial residents	3.56	17	106
	Asian residents	3.54	19	113
	Native Hawaiian and Pacific Islander residents	3.50	21	128
	American Indian/Alaska Native residents	3.49	22	131
	Hispanic residents	3.42	26	157
	Black residents	3.31	32	197



LTSSChoices.AARP.org

24

24

Equity in Housing and Transportation

- This edition of the Scorecard adopts the AARP Livability Index's methodology and findings to comprehensively describe and score states based on performance in housing and transportation.
- We found that neighborhoods with the highest percent of Black and Hispanic residents scored the highest in these areas, which may be in part due to these neighborhoods being less isolated and potentially with lower costs.
- Neighborhoods with more white residents scored less well for these indicators, in part because these might be more isolated, have fewer transportation options, and more expensive housing.



LTSSChoices.AARP.org

25

25

Opportunities for the Future

- Continue to invest in HCBS infrastructure
- Build and strengthen coalitions to drive change
- Boost supports for family caregivers and paid workers
- Implement Multisector Plans for Aging
- More robust HCBS data, including demographics
- Continue to scale Age-Friendly Health Systems.
- Build stronger and more equitable communities.



LTSSChoices.AARP.org

26

26

Thank you!

**For questions, please email us at
longtermscorecard@aarp.org**



LTSSChoices.AARP.org

27